

Fitting a Pre-Programmed RPM to Megane Models

Version 2

Applicable to: *Megane and Megane Scenic models 1995-99 approx.
With Infra-red (non transponder) keys*

Note: The process described here will only work if we've supplied you with a pre-programmed RPM unit.

General

The Record / Playback Module (RPM) needs to be fitted at the back of the Interior Fuse Box / Body Control Unit.

This is mounted on the right hand side of the steering column, and is held down by one fixing screw and two pivot pins. Depending in the length of the wiring harness, you may need to disconnect some of the multiplugs at the bottom of the unit in order to get it out.



If you're working on a Scenic model, it's easier to drop the unit down if you remove the throttle pedal first. It's held on by one 10mm nut, and is shown on the right:

All the connections shown need to be made to connectors on the top (black) face of the unit.

There are 3 connections that need to be made into the vehicle's wiring harness:

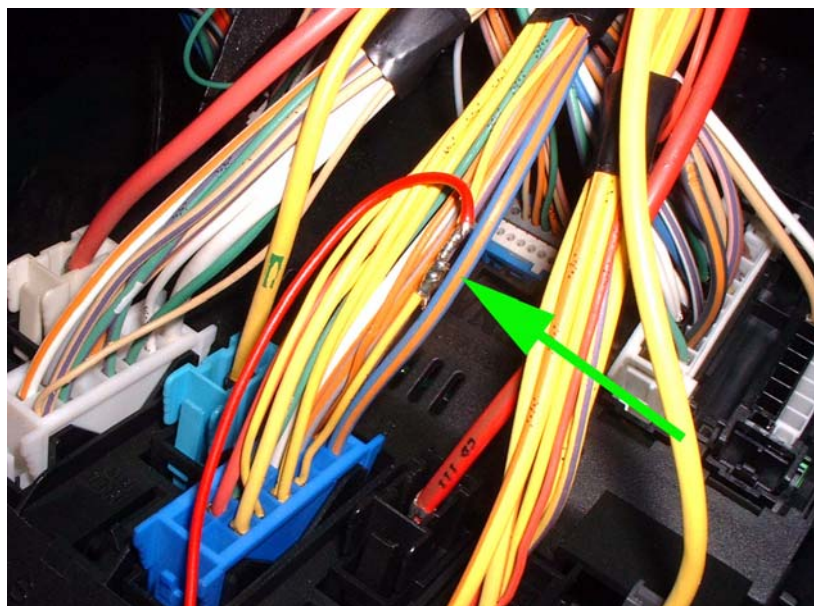
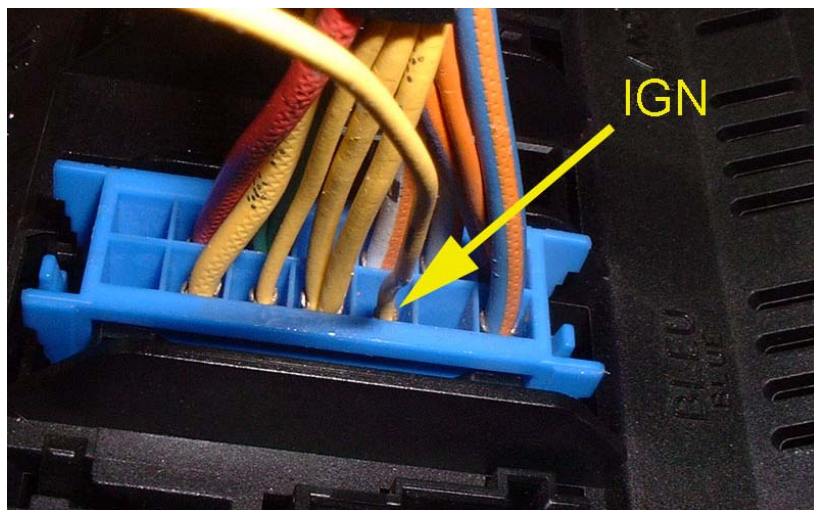
- Ignition feed (Red wire on RPM Unit)
- Ground (Black wire on RPM Unit)
- Data (Yellow wire on RPM Unit)

For the sake of reliability we recommend that these connections are made by soldering, rather than any other method.



Step 1: Connect Ignition Feed

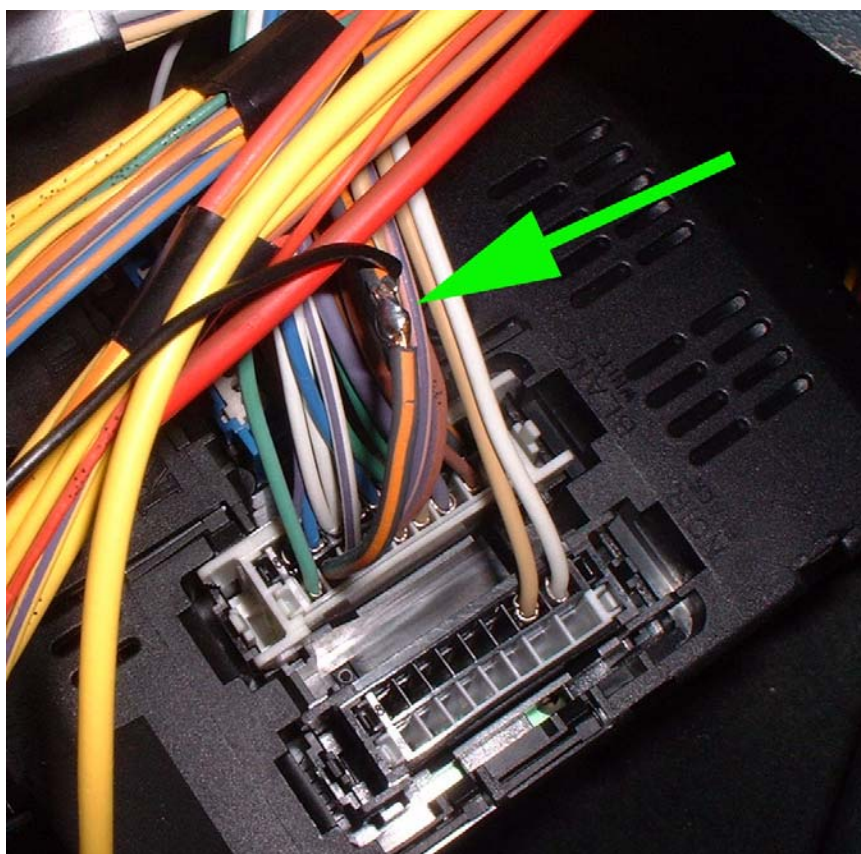
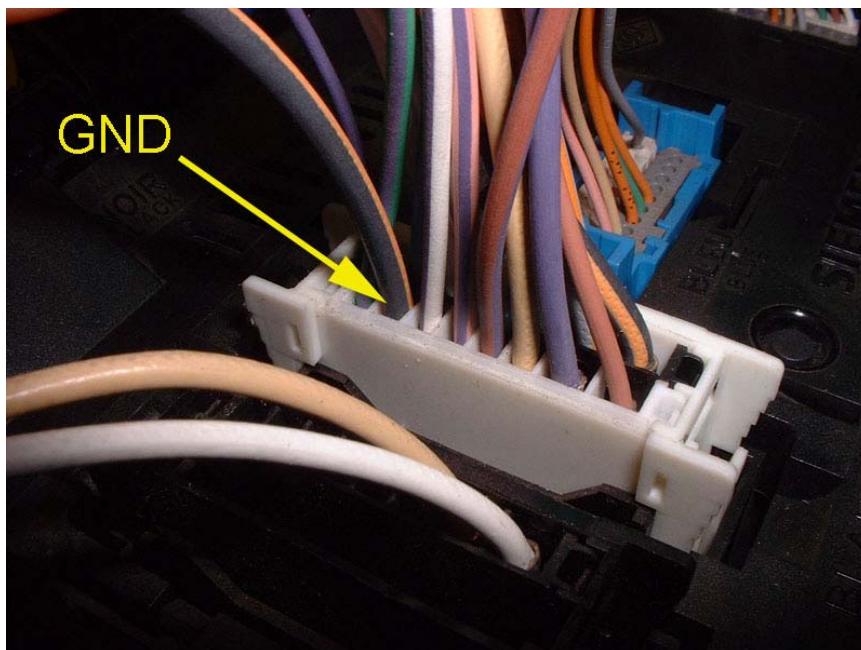
Ignition: Pin B5 on Blue 14way connector. Splice red wire into this wire



Wire colour is *usually* yellow, but see the note at the end of this document!

Step 2: Connect Ground Wire

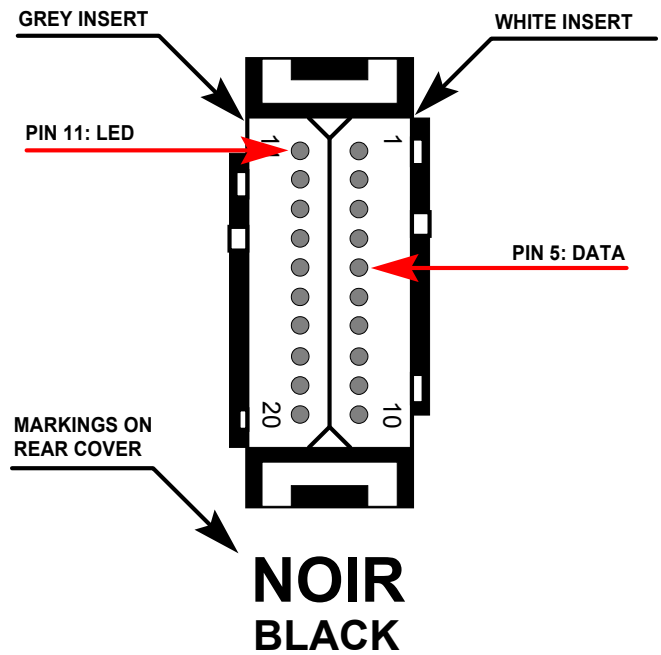
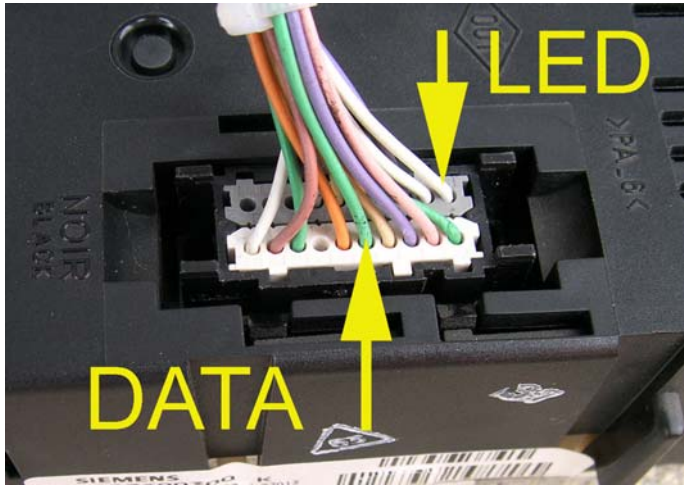
Ground: Pin A7 on 16 Way white connector. Splice black wire into this wire



Wire colour is *usually* black / orange, but again see the note at the end of this document!

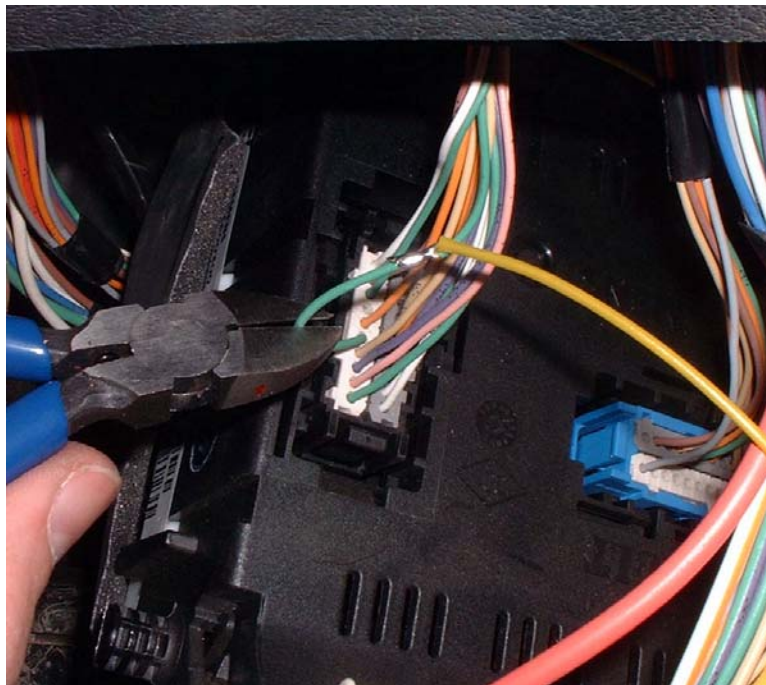
Step 3: Connect Data Wire

Data to Engine ECU: Pin 5 on 20 Way Black connector. Connect the yellow wire from the Record /Playback Module into the end of the cut wire.



Connector shown diagrammatically

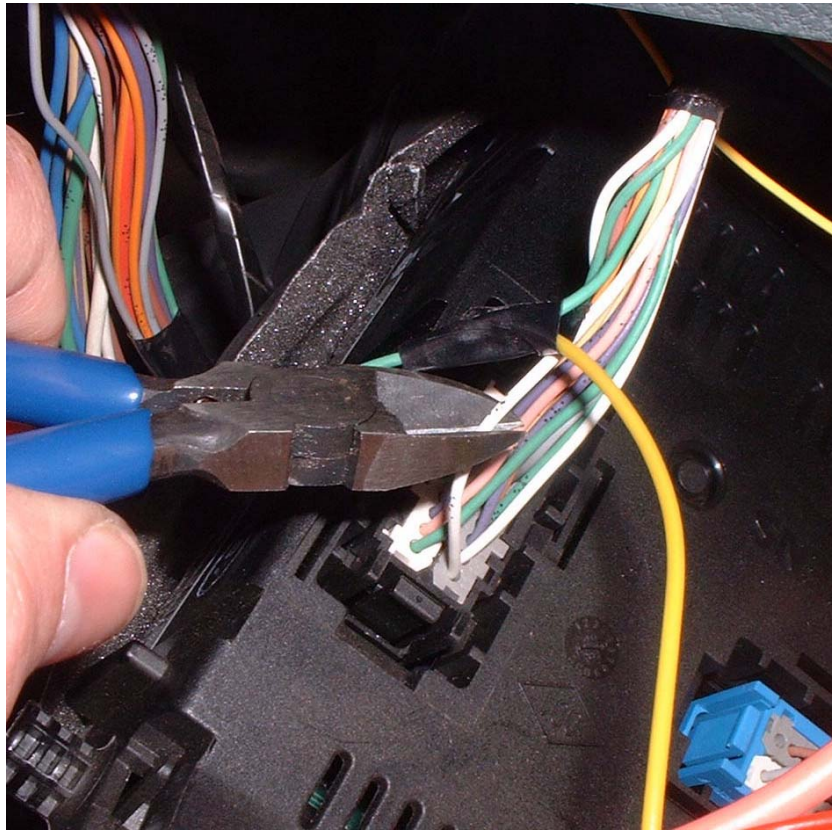
The photo below shows where to cut the green wire



Wire colours are *usually* green for data, and white for the LED, but once again, see the note at the end of this document!

Step 4: Disconnect the wire for the red security LED in the instrument pack

You may also want to cut the wire to the red security LED, to stop it flashing and causing a distraction whilst driving. This is connected to Pin 11 of the same 20 way black connector.



Notes:

The wire colours on the Renault wiring harness in the photos are for guidance only. Renault never specify wire colours, which means they're likely to change.